

4

3

2

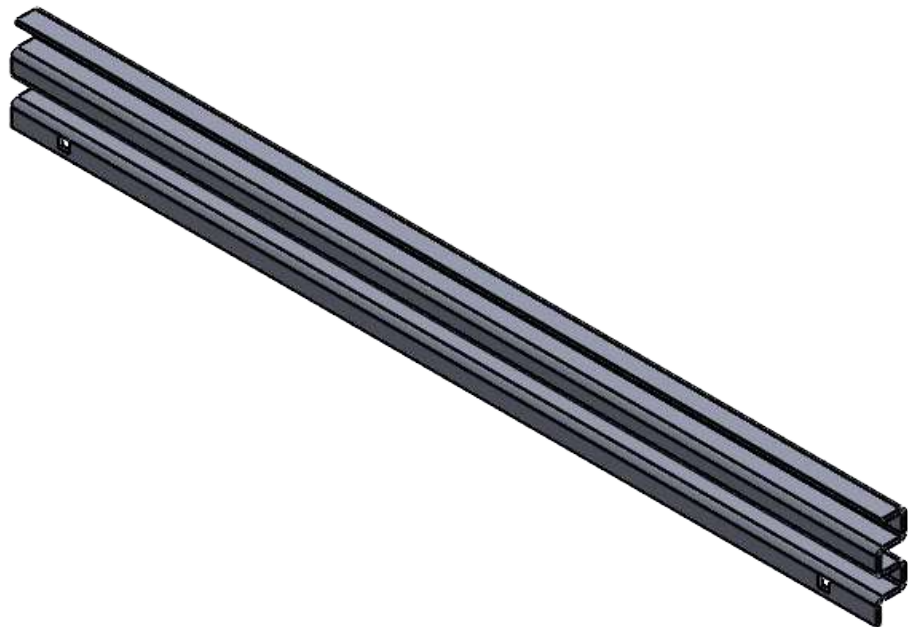
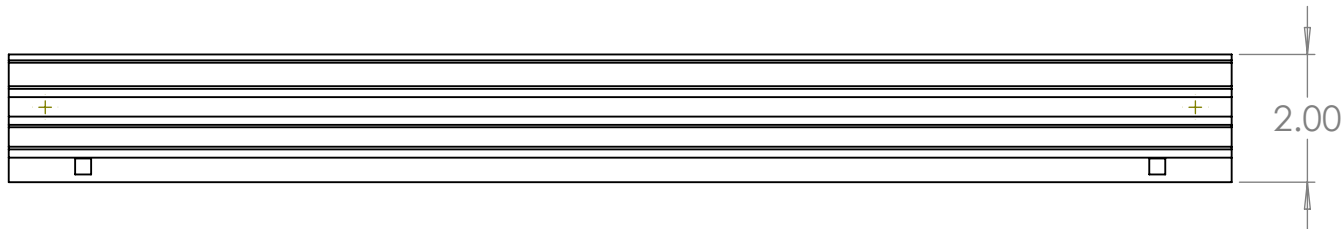
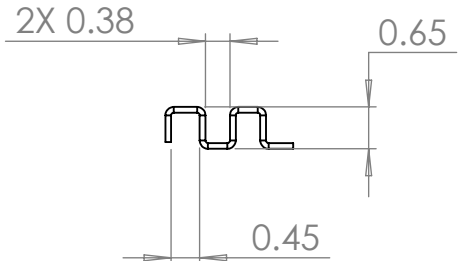
1

B

B

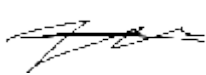
A


A



- NOTES: UNLESS OTHERWISE SPECIFIED.
1. PARAMETRIC MODEL. ALL DIMENSIONS FURTHER SPECIFIED IN 003-00086.
  2. FLAT PATTERN FOR PART SPECIFIED ON LAST SHEET OF DRAWING.
  3. PART SHALL BE FREE OF ANY SHARP EDGES AND BURRS.
  4. PART TO BE CLEANED OF ALL OIL AND DEBRIS.
  5. MATERIAL: A1008 STEEL
  6. FINISH: NONE
  7. GAUGE: 13
  8. PART SHALL NOT BE MODIFIED BY ANY PARTY OUTSIDE PAPERLESS PARTS, INC UNLESS WRITTEN OR EXPRESS APPROVAL HAS BEEN PERMITTED FOR THE PART.

**PROPRIETARY AND CONFIDENTIAL**  
THE INFORMATION CONTAINED IN THIS  
DRAWING IS THE SOLE PROPERTY OF  
PAPERLESS PARTS, INC. ANY  
REPRODUCTION IN PART OR AS A WHOLE  
WITHOUT THE WRITTEN PERMISSION OF  
PAPERLESS PARTS, INC IS  
PROHIBITED.

| UNLESS OTHERWISE SPECIFIED:   |   | NAME | DATE      |
|---|---|------|-----------|
| DIMENSIONS ARE IN INCHES<br>TOLERANCES:<br>ANGULAR: MACH $\pm 1.0^\circ$<br>BEND $\pm 0.5^\circ$<br>ONE PLACE DECIMAL $\pm 0.1$<br>TWO PLACE DECIMAL $\pm 0.05$ | DRAWN   | NM   | 8/30/2024 |
|   | CHECKED   |      |           |
|   | ENG APPR.   |      |           |
|   | MFG APPR.   |      |           |
|   | Q.A.  |      |           |
| INTERPRET GEOMETRIC<br>TOLERANCING PER: ASME Y14.5  |  |      |           |
| MATERIAL  |   |      |           |
| FINISH  |   |      |           |
| A1008 STEEL   |   |      |           |
| NONE  |   |      |           |
| DO NOT SCALE DRAWING  |   |      |           |

|   |                              |                   |  |
|---|------------------------------|-------------------|--|
|  |                              |                   |  |
| TITLE:<br><b>SIDE BRACE, SMALL VENTS,<br/>FULL SERVER RACK</b>                        |                              |                   |  |
| SIZE<br><b>B</b>  | DWG. NO.<br><b>003-00086</b> | REV<br><b>000</b> |  |
| SCALE: NTS  | WEIGHT: SEE MODEL            | SHEET 1 OF 2      |  |

3

2

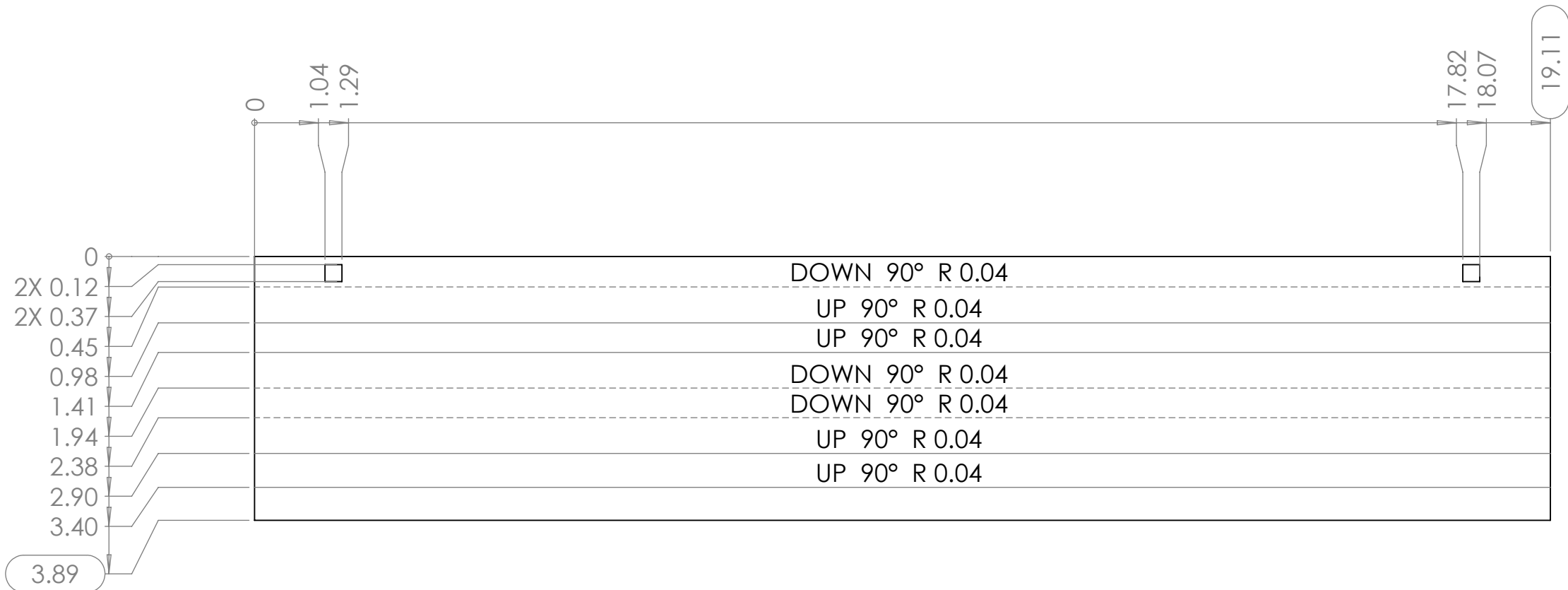
1

B

A

B

A



**PROPRIETARY AND CONFIDENTIAL**  
THE INFORMATION CONTAINED IN THIS  
DRAWING IS THE SOLE PROPERTY OF  
PAPERLESS PARTS, INC. ANY  
REPRODUCTION IN PART OR AS A WHOLE  
WITHOUT THE WRITTEN PERMISSION OF  
PAPERLESS PARTS, INC IS  
PROHIBITED.

| UNLESS OTHERWISE SPECIFIED:  |          | NAME                 | DATE         |
|--|----------|----------------------|--------------|
| DIMENSIONS ARE IN INCHES<br>TOLERANCES:<br>ANGULAR: MACH± 1.0°<br>BEND ± 0.5°<br>ONE PLACE DECIMAL ± 0.1<br>TWO PLACE DECIMAL ± 0.05 | MATERIAL | DRAWN                | NM 8/30/2024 |
|  | FINISH   | CHECKED              |              |
|  |          | ENG APPR.            |              |
|  |          | MFG APPR.            |              |
|  |          | Q.A.                 |              |
|  |          | COMMENTS:            |              |
|  |          |                      |              |
|  |          | DO NOT SCALE DRAWING |              |

|  |                              |                   |  |
|--|------------------------------|-------------------|--|
|  |                              |                   |  |
| TITLE:<br><b>SIDE BRACE, SMALL VENTS,<br/>FULL SERVER RACK</b> |                              |                   |  |
| SIZE<br><b>B</b>   | DWG. NO.<br><b>003-00086</b> | REV<br><b>000</b> |  |
| SCALE: NTS   | WEIGHT: SEE MODEL            | SHEET 2 OF 2      |  |